

Test Receipt Printer

**Jarltech
International**

2" & 3" Thermal Printer

Background and Challenges

There is always the need for thermal printer solution for printing receipts of transactions, be it a sales terminal, ticket dispenser, weighing scale, gas station, or ATM. Almost all of these systems use thermal printers. Jarltech is well-experienced to develop highly reliable thermal printer. Include 2 inch and 3 inch thermal printer.

Comparing to the Printer Module, the Printer Mechanism is lightweight and compact. In other words, the Thermal Printer Mechanism (without housing) which is more flexible to meet into a suitable mechanical and electronic device.

The Printer Mechanism can also become an ODM product that made according to customer needs. We have a professional team of engineers and technology professionals also the ID Mechanical Design working within our company to bring customer ideal into a real product.

The trend towards increased payment transaction automation, the advance of touch screen technology, the demand for secure and unattended print functionality and the continued need to restrict or charge for access has ensured demand from the Transportation and Parking sectors. Invariably, each activity requires a secure ticket or receipt to be printed, and Jarltech thermal printer series are field-proven in this sector.



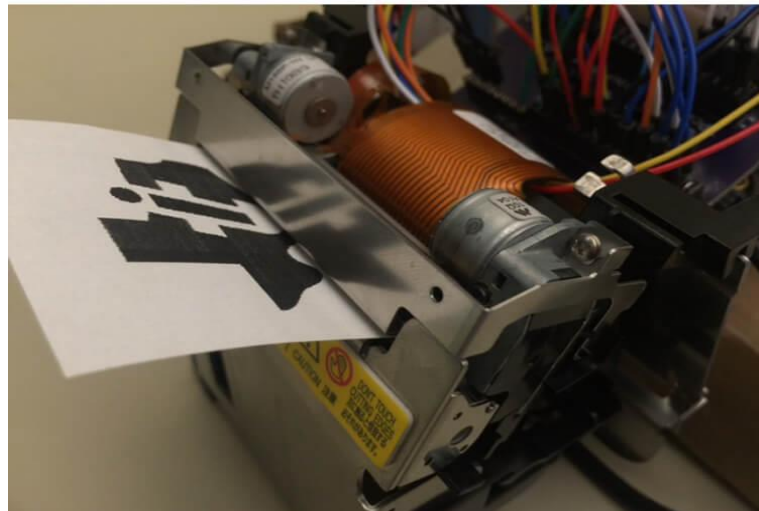
“Thermal Receipt Printers are a popular printing device for retailers around the world, to generate quick and efficient receipts for their customers. .”

- EVA Wang
Jarltech CO Marketing Specialist

How do we perform tests on a receipt printer?

Thermal Receipt Printers are a popular printing device for retailers around the world, to generate quick and efficient receipts for their customers. As a cost-effective solution, these thermal receipt printers have enhanced the way retailers do business as they can be connected in a variety of methods.

We helped our customers to tested both 2" and 3" thermal printers. We wanted to reach the result that is by using 12V while testing will achieve the performance of 24V. Most of the industries tend to use 24V; however, we choose to use 12V to test so that we could assume the printer is low power consumption. If so, even though the printer is disconnected of a power load, it can still be functional by using a battery.



Solution

The testing items include QR code, the quality of printing, and different functions of each element. Unlike other companies will just test the product itself directly, we choose to test the module of the thermal printer. Our mechanical engineer will remould the printer and make it as a testing module.

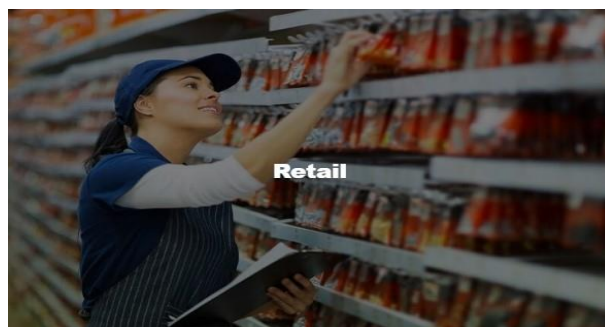
The reason why we used this way is because testing module is more flexible, so that it can be applied on different products, such as POS or various ticket machines.



Application

Retail

Your business may integrate mobile devices with stationary printers or equip employees with portable printers to be used on the sales floor. Thermal printer connected POS devices payment , application: Restaurants, Department Stores, Kitchen, Convenience Stores.



Inventory Management

In the warehouse, cross docking, warehouse management and delivery on time Jarltech thermal printer operations can be made more effective.

